

GD-2201S



Eco Solvent Printer (with one I3200 print head)



Grando Eco-Solvent Ink



* 2.2m Width. Single Epson I3200/I3200HD Printhead. Up to 26.5 m²/h (4 Pass) | 4/8 Colors

Stable & High-Efficiency Printing System

The 2201S features a solid integrated welded frame and magnetic encoder positioning, paired with a high-performance single I3200 printhead. It delivers stable, drift-free operation even during long print runs, with a speed of 26.5 sqm/h (4 Pass) and precise step-by-step accuracy, ensuring high productivity and consistent output quality.

Versatile Media Compatibility

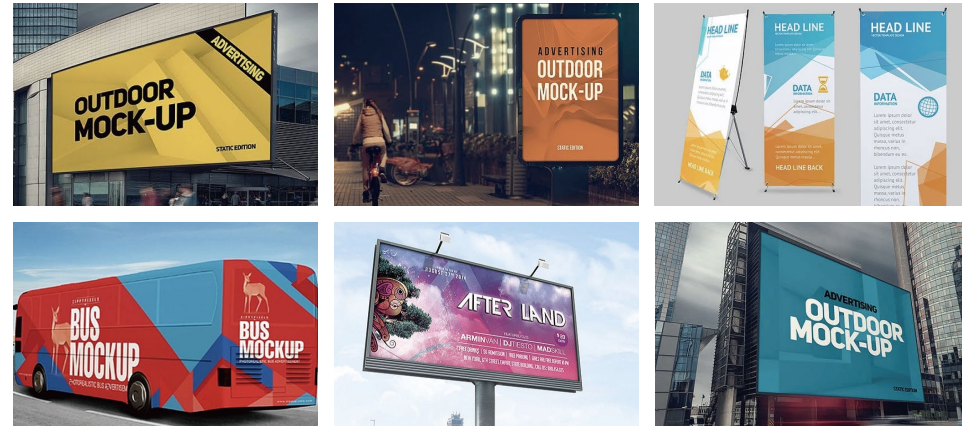
With dense vacuum holes and a reinforced platform, the machine keeps media flat and wrinkle-free. The adjustable carriage and optional 3-level pressure control handle all material thicknesses, while the dual-motor take-up ensures neat rolls.

Smart & User-Friendly Operation

The 3-color indicator and waste ink alarm let you check status at a glance. The touchscreen control, electric pinch rollers, heating system, and LED lighting simplify daily use for a professional experience.

• Technical Specifications

Model	GD-2201S	
Print Head	One I3200 Print Head	
Printing Technology	Piezoelectric Inkjet	
Acceptable Media	Width	2200 (mm)
	Thickness	Maximum 39.3 mil(1 mm)
	Weight	220.5 lb.(100 kg)
Printing Width	2200 (mm)	
Ink Cartridges	Type	Eco Solvent Ink
	Capacity	4x4 CISS (220ml cartridge with 1.5L ink tank); 8x8 CISS (8-color) optional
	Color	CMYK/CMYKLCmLKLKlik
Printing Resolution	720x1200 / 1800 / 2400 dpi	
Printing Speed	4pass(720x1200dpi) : 27.4 m ² /h	
	6pass(720x1800dpi) : 18.3 m ² /h	
	8pass(720x2400dpi) : 13.7 m ² /h	
Media Heating System	Intergrated post heater & Infrared Dryer & Fan system	
Interface	TCP Network Port	
Power	4000W	
Power Supply	AC 220V ± 10%, 50/60 HZ	
Dimensions(with stand)	112.6(W)x31.7(D)x35.4(H) in.	
	2861(W)x806(D)x900(H) mm	
Weight(with stand)	1058.2 lb. (480 kg)	
Package Dimensions	129(W)x31(D)x39.3(H) in.	
	3270(W)x620(D)x1700(H) mm	
Package Weight	Entirety Packing : 1278.7 lb. (580 kg) Split Packing : 1036.2 lb. (470 kg)	
Environment	Power on	Temperature: 59 ℉ to 90 ℉ (15 to 32 C) / Humidity: 35 to 80% (no condensation)
	Power off	Temperature: 41 ℉ to 104 ℉ (5 to 40 C) / Humidity: 20 to 80% (no condensation)
Accessories	Stand, take-up and discharge device, cold air drying system, large ink supply system, etc.	



Suitable for PP, photo paper, car sticker, lightbox film, canvas, non-woven fabric, etc



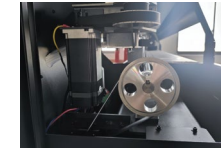
Intelligent continuous ink supply system with large capacity ensures stable, efficient printing.



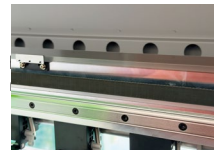
Head cleaning and moisturizing makes operation and maintenance more convenient



Built in temperature and humidity display



High quality DC servo motor has good stability and long service life



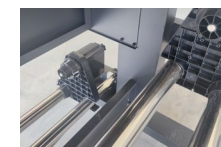
THK high-precision mute rail



Three-foot pinch roller structure brings more stable feeding accuracy



Infrared heater and cooling fan



External power supply, intelligent rolling system.